

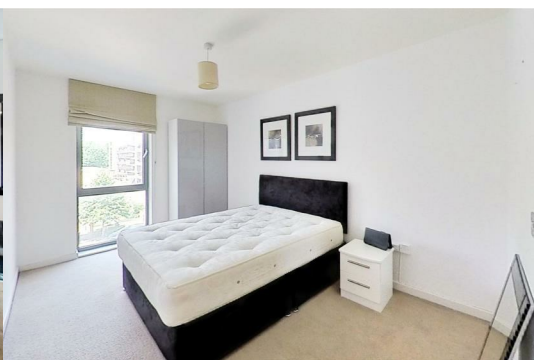
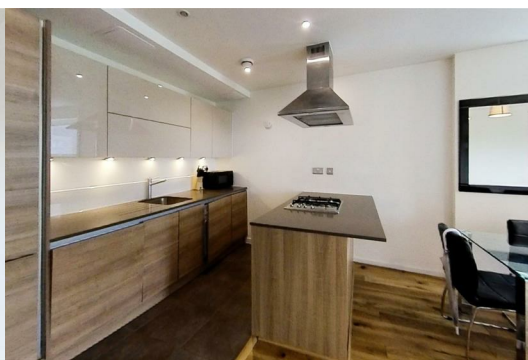
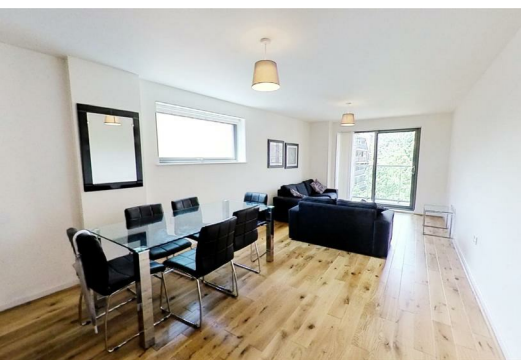
## Crowder Street

London, E1 0EZ

**£2,600 Per month**



Stylish 2-bed, 2-bath apartment with balcony in E1 – just 5 mins from Shadwell DLR and moments from Tower Bridge. Ideal for students or professionals.



Modern 2-Bed, 2-Bath Apartment with Balcony – Moments from the City

Located on Crowder Street, E1, this bright and spacious two-bedroom, two-bathroom apartment offers stylish city living just minutes from the heart of London.

The property features a fully fitted kitchen with dishwasher and space for dining, a private balcony for your own outdoor escape, and two generous double bedrooms with fitted wardrobes – including a master with en suite. There's also excellent storage throughout.

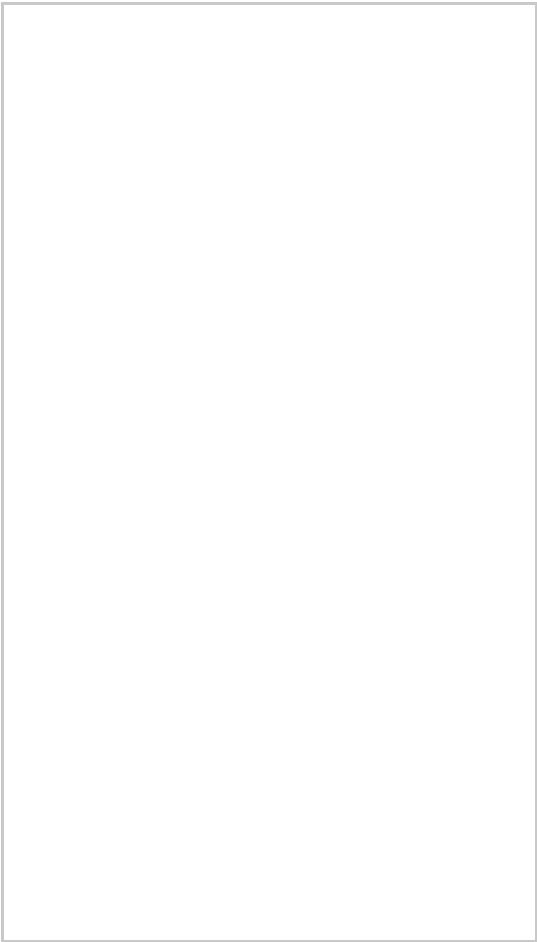
Only a 5-minute walk to Shadwell DLR, and close to Tower Bridge and St. Katharine Docks, this is ideal for professionals wanting convenience, comfort, and lifestyle.

Contact us today to arrange your viewing – this won't be around for long!

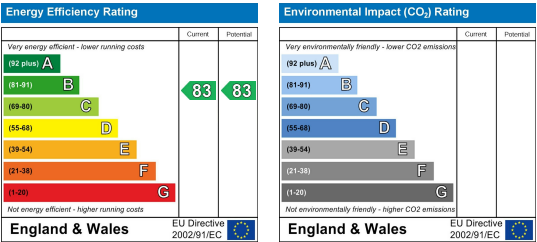
Area Map



Floor Plans



Energy Efficiency Graph



These particulars, whilst believed to be accurate are set out as a general outline only for guidance and do not constitute any part of an offer or contract. Intending purchasers should not rely on them as statements of representation of fact, but must satisfy themselves by inspection or otherwise as to their accuracy. No person in this firms employment has the authority to make or give any representation or warranty in respect of the property.